



international development engineering architecture studio



MILANO via spartaco, 27 - **ROMA** via tevere, 44 - **TORINO** via a.filippa, 14

vision

a place for everyone.

shaping cities, creating connected communities and building the future around the world.

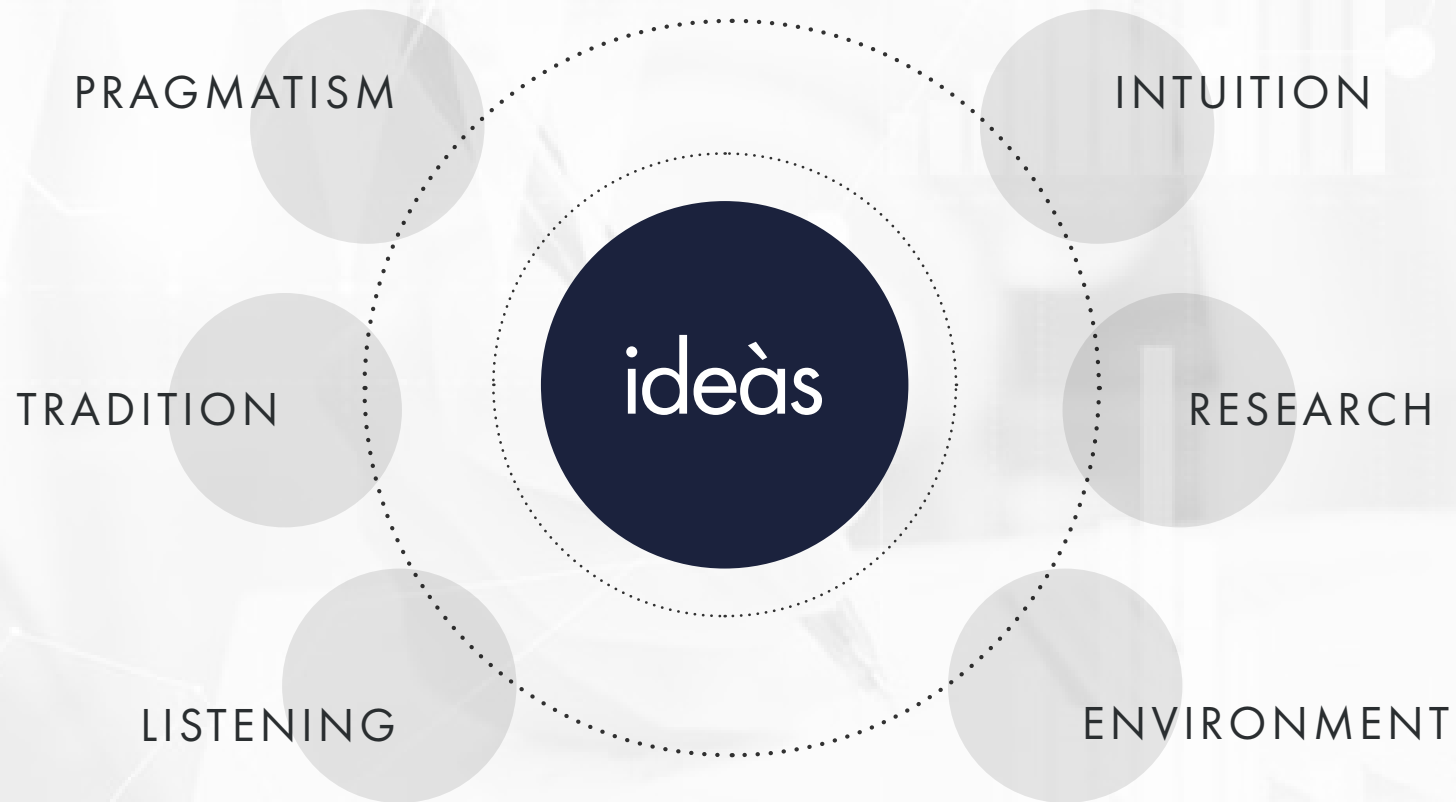
decades of experience allowed ideà to mature in the fields of development, design, creation, construction and investments to improve places, buildings' recovery, energy efficiency.

we are deeply committed to making the world a better place in everything we do.
we apply world-class knowledge and Italian taste to solve complex challenges and discover unrepeatable opportunities.

our employees and collaborators help us to create places that set benchmarks
in social and environmental sustainability and deliver transformative
outcomes for every kind of community.



iinternational ddevelopment eengineering àarchitecture sstudio



we manage every phase of the development of the projects and the construction sites
to guarantee continuity between the ideation phase and its realization.



an international team - a multidisciplinary project

we follow the journey in every phase:

our team encompasses all the skills needed to oversee the process from the initial analysis and ideation stages to the on-site management.

as of now, ideàs s.r.l. only works in italy, for both public Institutions and private customers, but its new and short-term approach aims to an expansion of its horizons towards other european countries as well as to the northern africa and the persian gulf.

our approach is multidisciplinary, involving specialists from all over the world capable of perfecting various aspects of the project, making it sustainable and effective.



complete oversee of every phase

- we carry out the preliminary analysis of the works and their feasibility
- we identify the constraints (if any) and the availability of the necessary resources
- we execute the structural design of the works to be built or refurbished
- we evaluate the possibilities of accessing to Incentives and benefits granted by the state
- we take care of the project development and definition
- we manage the relationships with the customers as well as with all the other contractors & suppliers that were chosen to work with
- we take care of the full coordination & supervision of the worksites

environmental economics: past, present & future

"study nature, love nature, stay close to nature: it will never fail you"

nowadays, we know that the saving of economic, energy and environmental resources stands as the cornerstone of a balanced and sustainable real estate development, when all this is seen as a basic portion of the construction processes. last, but certainly not least: the concept of sustainability has been, is, and will always remain at the center of our concept of architecture.

this is our legacy.

and since we do believe in the correctness of our path from the day we started walking it, as well as we believe that our work, if done properly, can play an important role in the present and future of the world, we do trust that our legacy can become, in the end, an opportunity for learning and improvement dedicated to the generations to come.



functional architecture

functional architecture addresses challenges, meets requirements, and creates opportunities. our job is to manage the complexity of elements like: resources, opportunities, expectations, needs, constraints, wishes, concepts, and ensure that they integrate into a dynamic and fluid process until the projects' realization.



studio

"to create architecture is to put in order functions and objects"

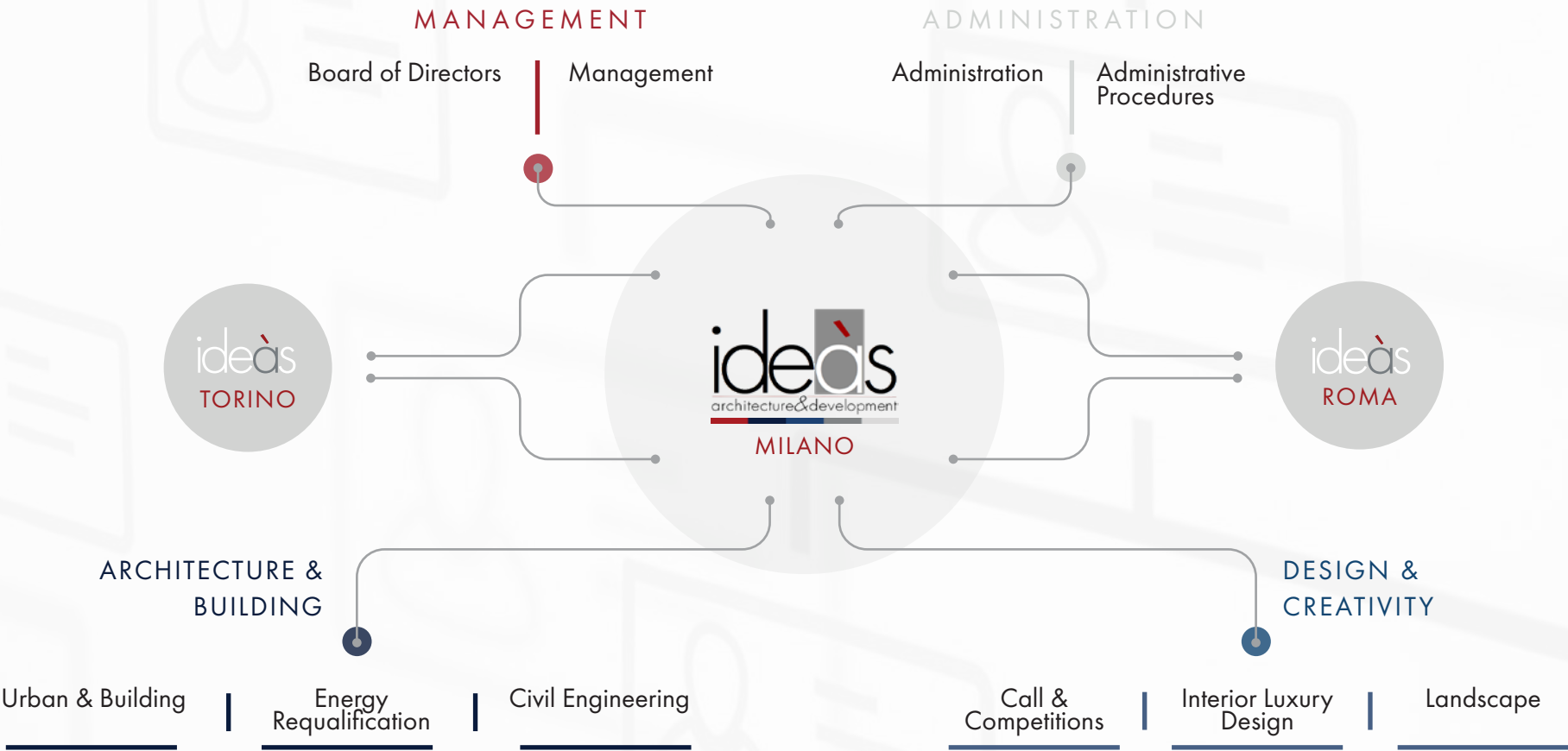
Ideàs S.r.l. (ltd) is a young and dynamic **engineering & architecture company** whose main goal is to provide integrated design services and consulting connected to real estate projects and various other construction initiatives.

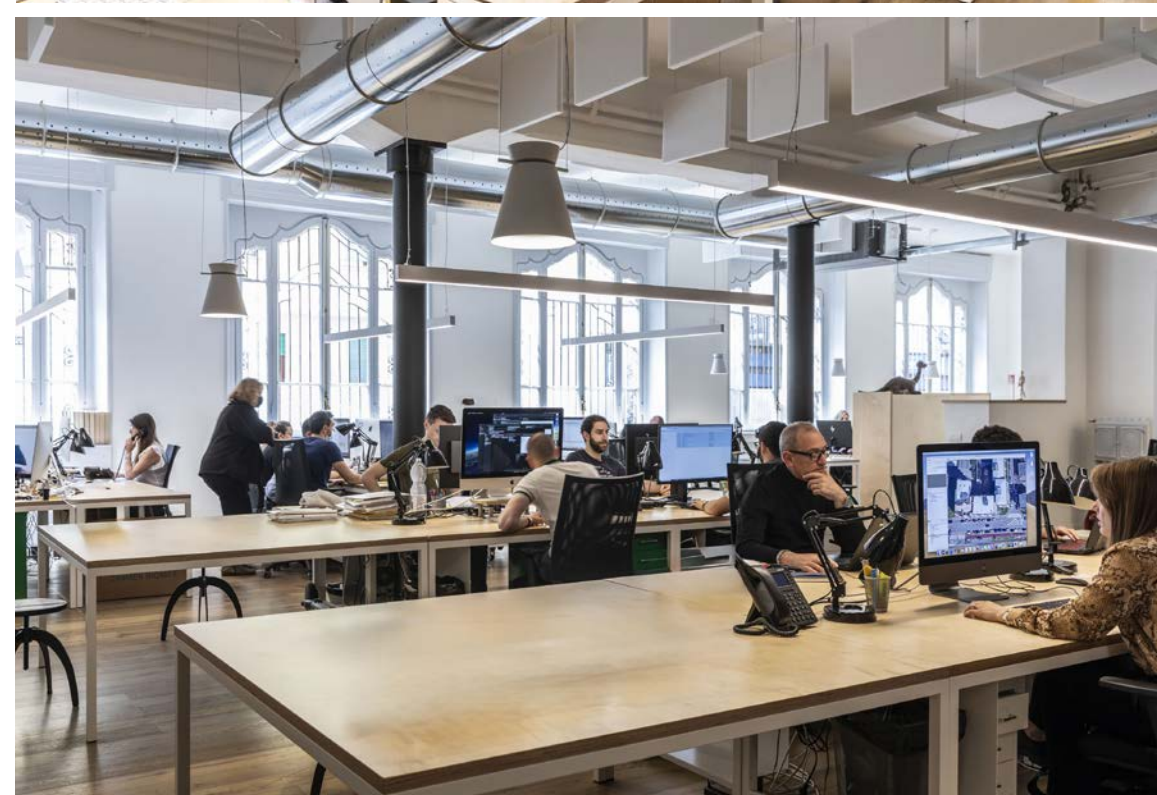
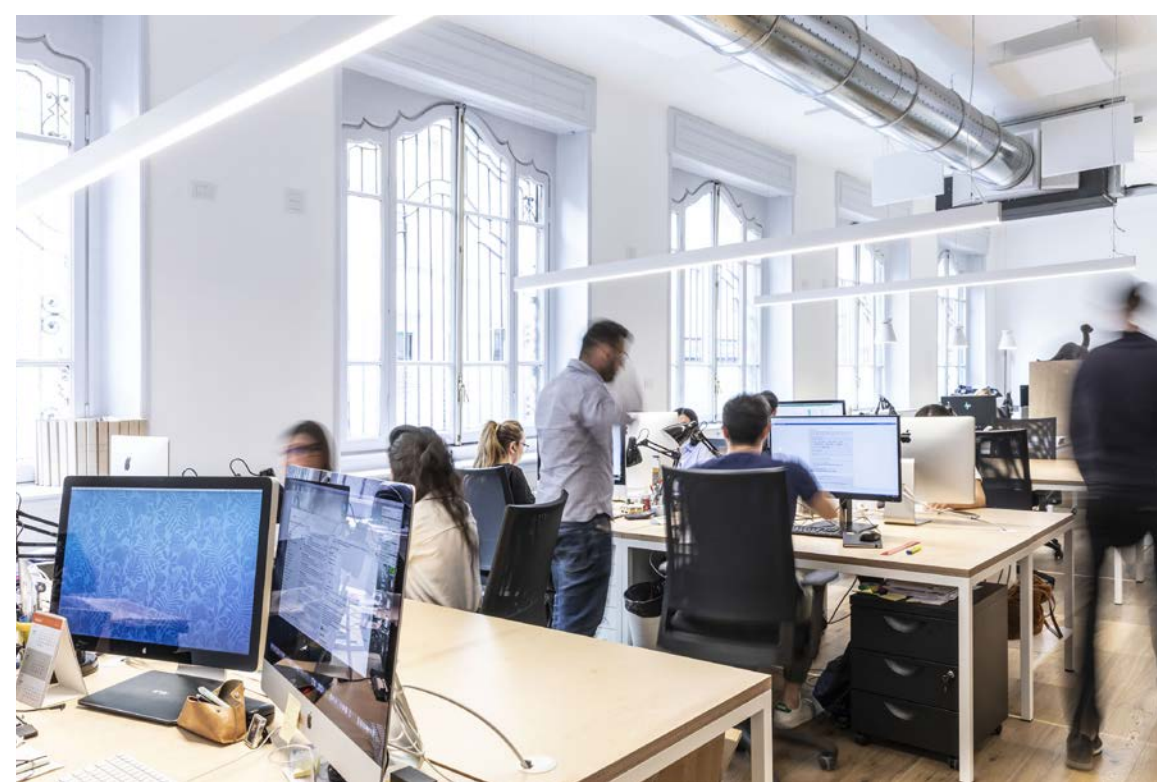
we bring ideas to life

architecture is the delicate balance of blending practicality with imagination. it explores the boundaries and possibilities of its surroundings, while **shaping ideas into tangible forms**, spaces, and functions. yet, it is also a precise science, analyzing volumes, forces, flows, economics, behaviors, and how people perceive and interact with space.



Organization chart







In Ideàs,
the **design** is, at the same time,
a **Culture** and a way of thinking,

both based on **dialogue**
and combination of the **analyses**
and intuitions resulting from
a **creative process**.

team



LADISLAO BALBIANI

founding partner/senior architect



MIRO BETTINELLI

founding partner

MILANO

besana luca - senior architect
bona claudio - senior architect
brizzi anna - senior architect
buffelli davide - senior engineer
carpinelli rita - accountant
cirillo matteo - surveyor
darif mariam - accountant
di lorenzo cosimo - engineer
duzgun imge - architect
fanchini stefania - landscape architect
farahani mahdiah - architect
favaro daniel - architect
fienga paolo catello - iso manager
franco chiara - architect
galante cristina - accountant
grasso fabio - web designer

giaggia giuliano - senior engineer
jusufati arlind - architect
leopizzi marco luigi - engineer/architect
macchia giulio - engineer
maggi silvia - real estate consultant
mancinelli elena - architect
manocchia elena - surveyor
provenzano claudia - accountant
putzolu efisio - architect
ralf lopez romeo - surveyor
riverso luciana - architect
sag zeycan muge - architect
schivalocchi sabrina - architect
sherif bassam - engineer/architect
tataranni annalisa - surveyor
zacconi amerigo - surveyor

ROMA

lambiase bruno - senior architect
bambini patrizia - architect
basile elisa - collaborator

florin gherman - surveyor
menzione valentina - engineer
vicenti gaia - architect

TORINO

roberto carapezza - senior architect
elisabetta marchese - senior architect

davide ghione - architect
francesca succurro - surveyor

construction sites' list

a knowledge immediately available to anyone for an investment which, if made with competence and technical skills, can be surprisingly effective.

the benefit for the environment, deriving from saving resources and limiting the production of pollutants, is notable and, if added to other sustainable green building practices it will represent a further capital deriving from the initial investment.



energy-saving interventions



seismic prevention interventions



 Piazza Giovanni XXIII, - Senago
  De Ruggiero, 19/35 - Milano
  Delle Quaglie, 11/3 Resinelli - Mandello del Lario
  Dante, 5 - S. Donato Mil.se
 Pascoli, 19 - Bollate
  San Domenico Savio, 14 - Lissone
 Crespi, 4 - Magnago
  Carducci, 1 - Cassano d'Adda
  SS Padana Superiore - Pioltello
  Baldo degli Ubaldi, 8 - Milano
  Clitumno, 11 - Milano
  Serrati, 12 - S. Giuliano Mil.se
  Quadronno, 34 - Milano
  Romolo, 6 - Milano
  Omero, 26 - Milano
  Buonarroti, 5 - S. Giuliano Mil.se
  Ponte Seveso, 39 - Milano
  Torino, 37 - Sesto S. Giovanni
  Vespucci, 2 - S. Giuliano Mil.se
 Custodi, 4 - Milano
  Gorky, 18 - S. Giuliano Mil.se
  Fratelli Zoia, 49 - Milano
  Concilio Vaticano II, 4 - Milano
  Lodi, 35-37 - Milano
  Milano, 2/6 - S. Giuliano Mil.se
  Fratelli Rosselli, 6 - Gessate
  Lamarmora, 2 - Milano
  Nava, 15-17 - Milano
 Santa Maria Valle, 5 - Milano
  Longarone 18/13 - Milano
 Umbria 50 - Milano
 Alighieri Dante 101 - Buccinasco
 Monte Bianco 28 - Novate Milanese

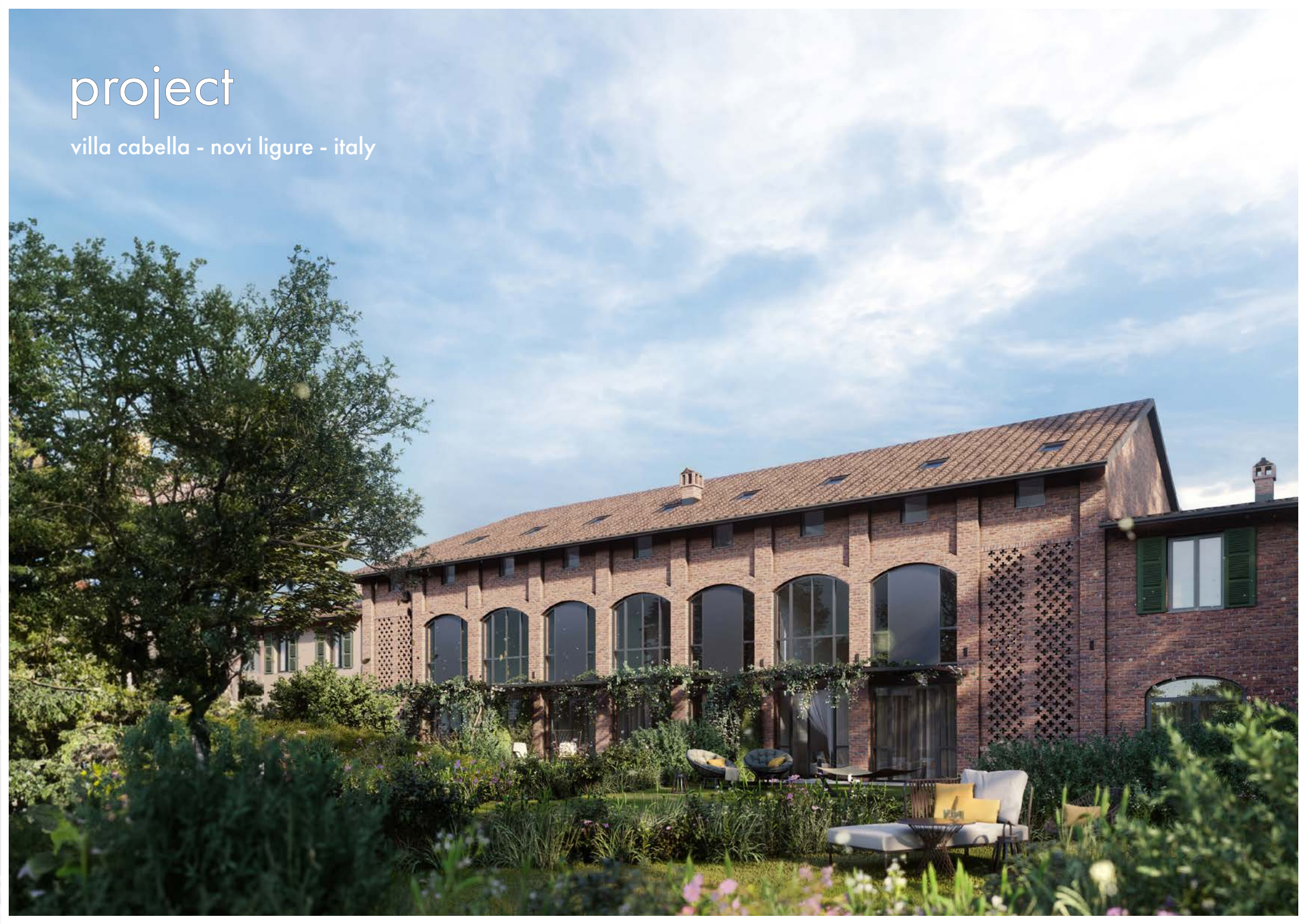
  Codecasa, 17/C - S. Giuliano Mil.se
  Gilera, 8 - Arcore
  Ungheria, 1 - Milano
  Bergamo, 17 - Brembate
  Mario Borsa, 22 - Milano
  Don Minzoni, 25/31 - Poasco
  Andrea Costa, 7 - S. Donato Mil.se
 Brusa, 1/3 - Malnate
  Papa Giovanni XXIII, 13 - S. Giuliano Mil.se
  Mercalli, 16 - Milano
  Cavallotti, 340 - Cond. Tirrenia - Sanremo
  Cappuccini, 9 - Lecco
  Turati, 76 - Lecco
  Leonardo da Vinci, 3 - Vignate
  Gramsci, 4 - Ponte San Pietro
  Toscani, 8 - S. Giuliano Mil.se
  Beato Angelico, 5 - Lecco
  Don Luigi Monza, 44/46 - Lecco
  Napoli, 5 - Cassina de Pecchi
  Foppa, 45 - Milano
  Cervignano, 16 - Milano
  Sporting Mirasole - Noverasco di Opera
 Massarani, 7 - Milano
  Voghera, 9 - Milano
 Indipendenza, 18 - Milano
  Emanuele Filiberto 45/47 - Lecco
  Bergamo, 100 - Lecco
  Maroncelli, 2 - S. Giuliano Mil.se
  Baracca, 11/5 - S. Giuliano Mil.se
 Achille Papa 24 - Milano
  Ungheria 1 - Milano
  Marco Polo 7 - San Giuliano Milanese
  Guido de Ruggiero 19/35 - Milano

  Oberdan, 5 - Pantigliate
  Monte Nero, 7 - Milano
  Ajaccio, 7 - Milano
  Mameli, 13/15 - Sesto Ulteriano
  De Ruggiero, 41/53 - Milano
  Dante, 5 - Vimercate
  De Finetti, 13 - Milano
  Bergamo, 12A - Milano
  Berbenno, 533 - Berbenno
  Quintaberta, 2 - Merate
  Bixio, 8 - Monza
  Italia, 47 - Aprica
  Muratori, 44 - Milano
 Civerchio, 10 - Boltraffio, 18 - Milano
  Pedretti, 39 - Bezzi - Cusano Milanino
  Benozzo Gozzoli, 160 - Milano
  Mario Borsa, 24 Milano
  Lorenteggio, 35 - Milano
  Quintaberta, 3 - Merate
  Vittorio Emanuele II, 21 - Buccinasco
  Mazzini, 96 - Sanremo
 Paolo Sarpi, 8 - Milano
  Inganni, 81 - Milano
  Donati, 49 Casirate d'Adda - Bergamo
  De Ruggiero 55/63 - Milano
  Cesare Battisti, 108 - Arcore
  Matteotti, 45 - Arese
  Pascoli 3 - Buccinasco
  Passeggiata Rossini 2 - Buccinasco
  F.lli Cervi 2 - Tavazzano con Villavesco
  Leonardo da Vinci 3 - Vignate
  Di Vittorio 47 - San Giuliano Milanese
  Curiel 24 - Limbiate



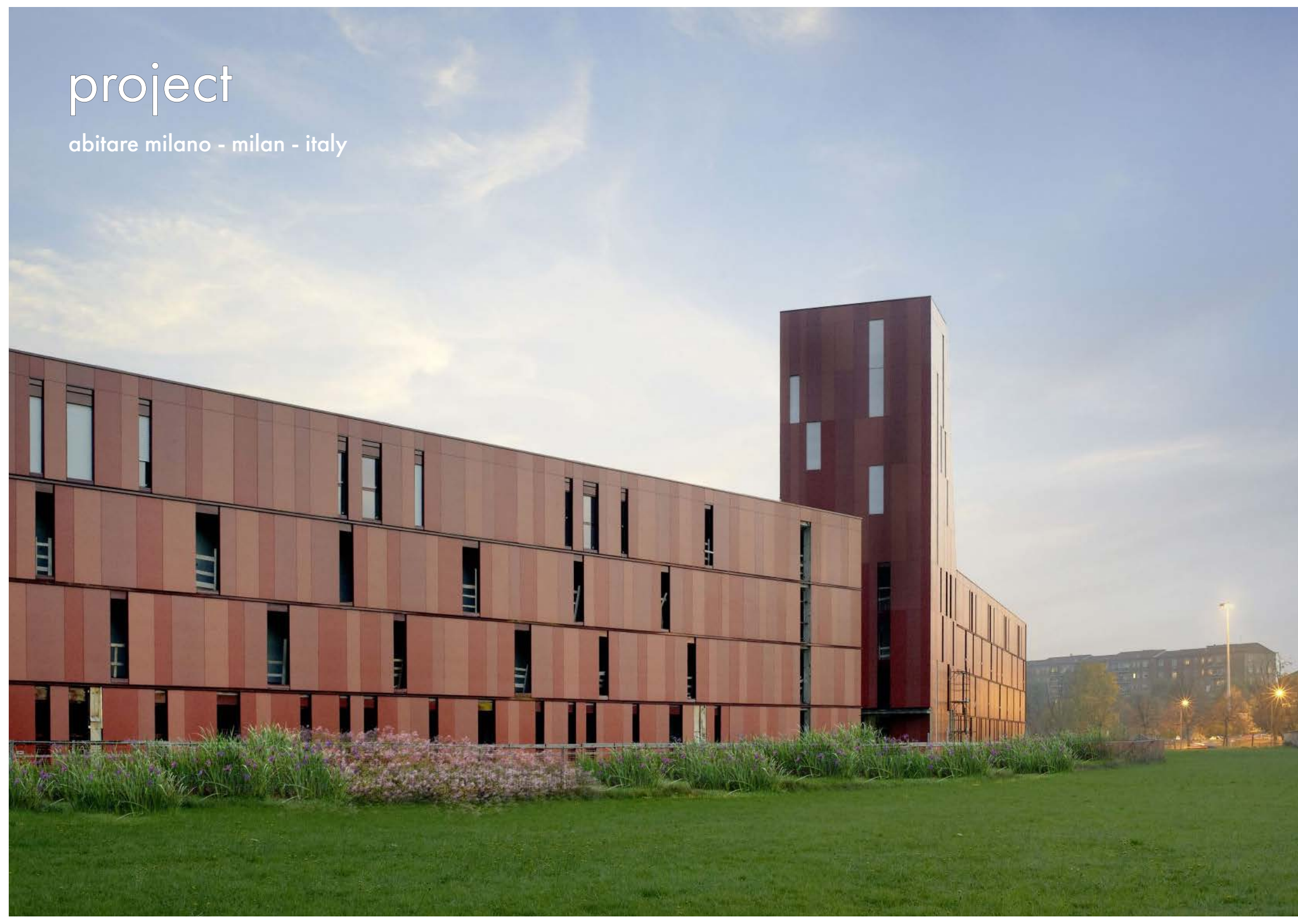
project

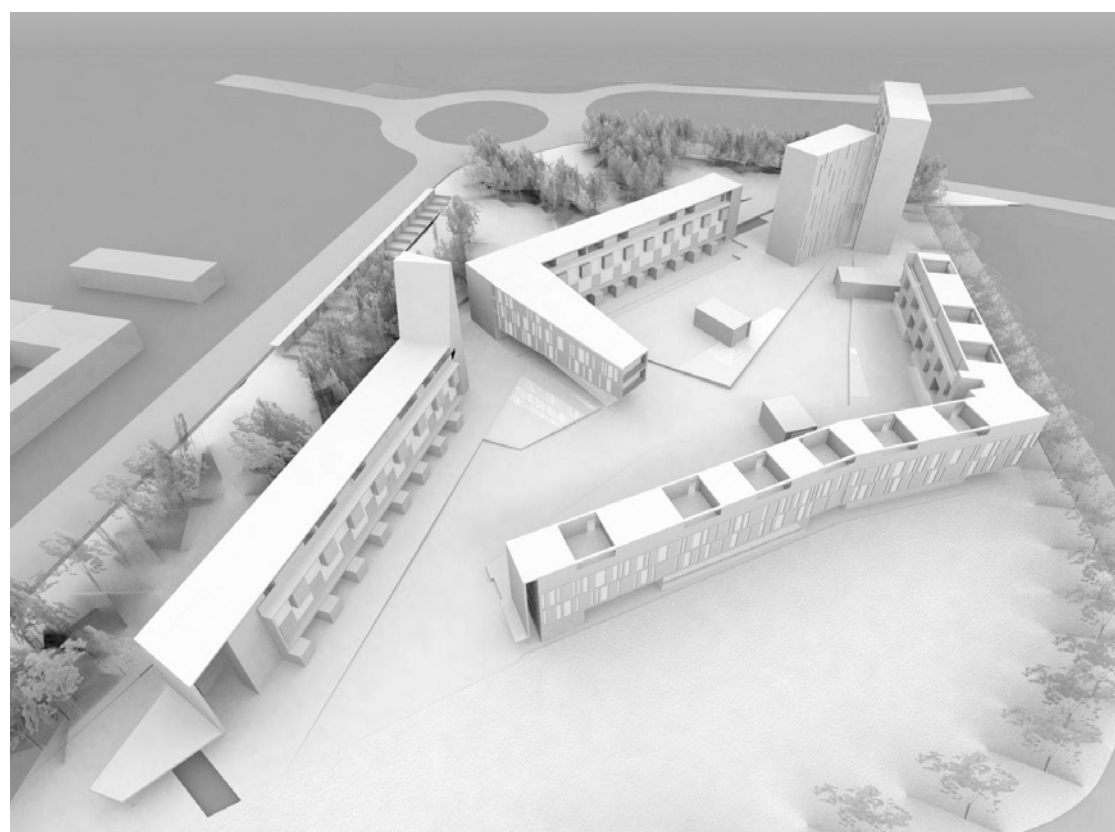
villa cabella - novi ligure - italy



project

abitare milano - milan - italy





project

babyakovo new town - russia



BUILDINGS 10 FLOORS

sport area

- TWO WAYS ROA
- PLAYGROUND
- ▲ FOYER

30 parking

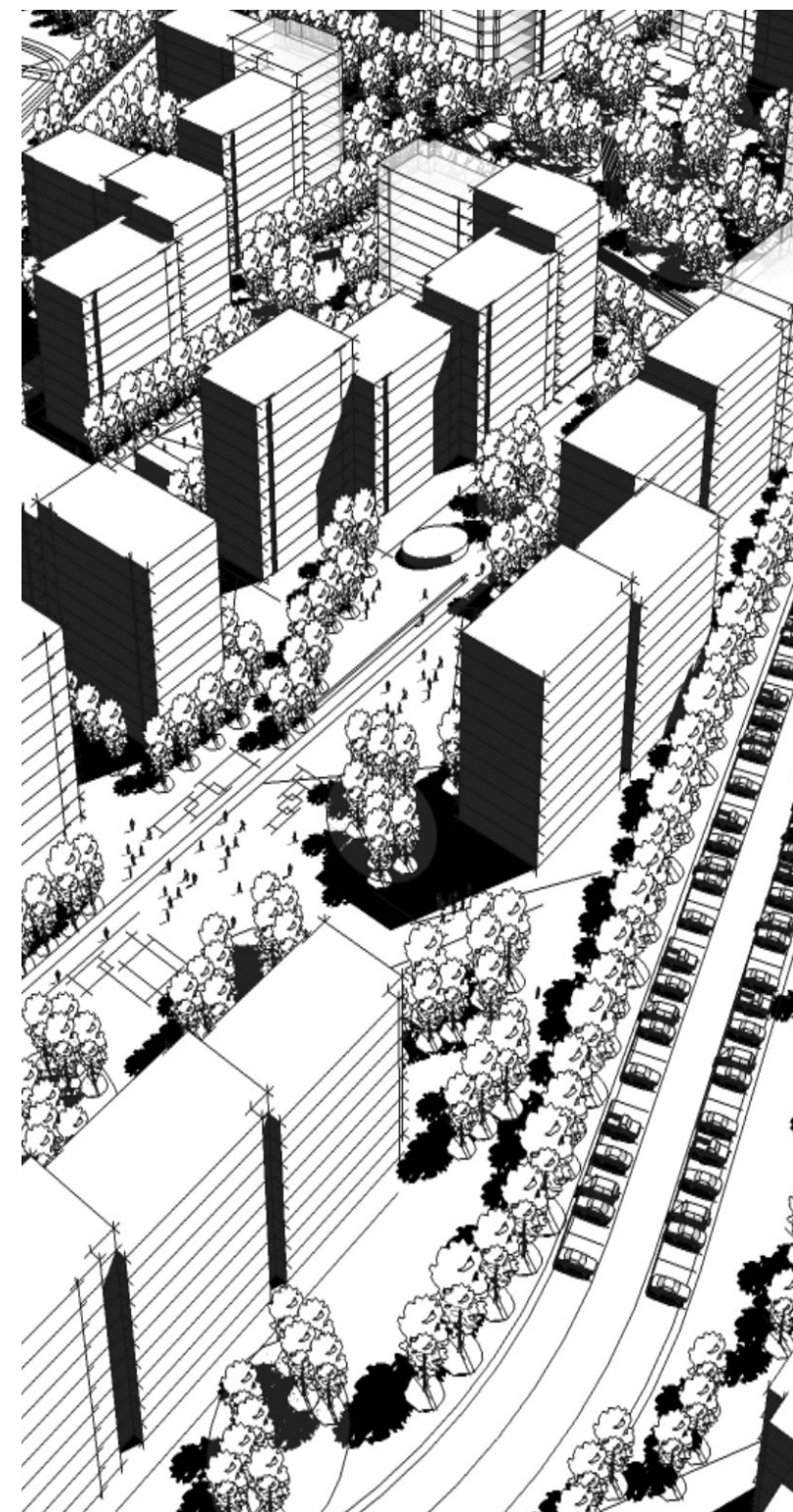
ABOUT 6MT
RESPECT FOR
FIREFIGHTER

BADGET
ENTRANC

60 parking

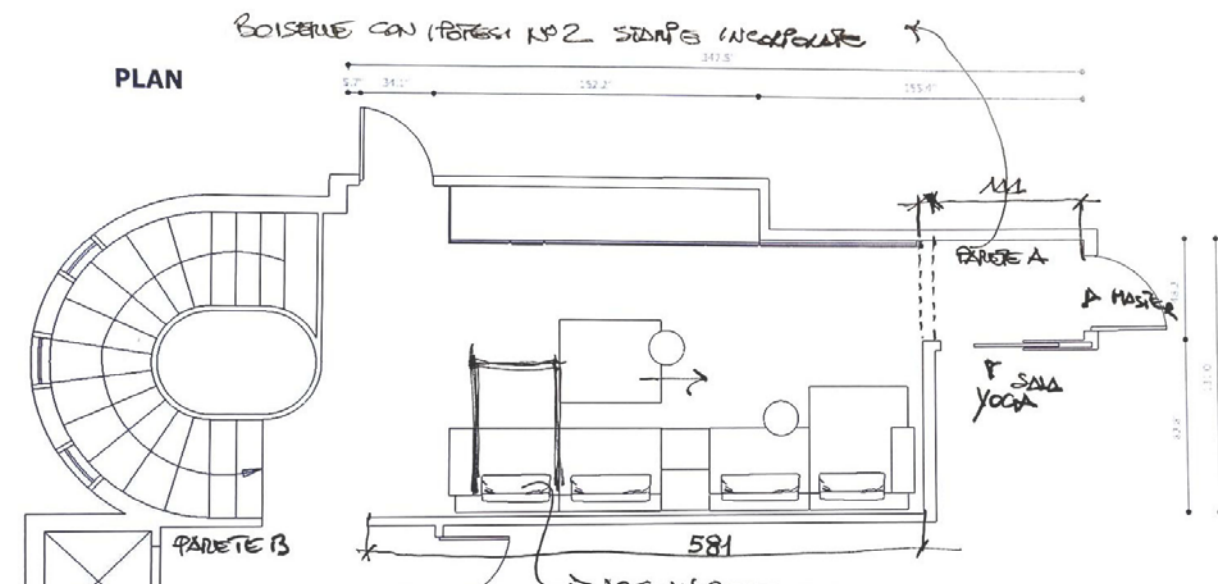
main road

110 parking



project

miami - florida



project

sesto san giovanni - milano





project

sporting mirasole -
noverasco d'opera





via spartaco 27 – 20135 **MILANO** +39 02 45388307

via tevere 44 - 00198 **ROMA** +39 06 84025049

via a.filippa 14 - 10139 **TORINO** +39 011 2071650

www.ideas.archi

info@ideas.archi

